

ascent[▲]
reach for the sky



ascent h1 English Instructions

Thanks!

Thank you for your purchase of the Ascent wrist-mounted vario. This product was designed by engineers who also happen to be paragliding pilots. We wanted a product that would meet the following criteria:

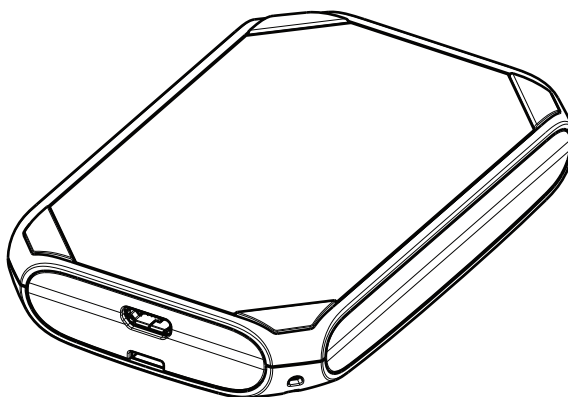
- Small
- Light Weight
- Easy to Operate

There was nothing currently available that satisfies each requirement so we sat down, rolled up our sleeves, and after many hours of hard work, prototype builds, programming, reliability testing, and test flights came up with what we believe is the best small, rechargeable variometer available.

This was our introduction in 2008 to our v1 unit. After selling thousands of varios, getting pilot feedback, and collecting lessons learned, we decided to do the whole thing again. We believe that this new product both improves on the original concept while retaining the ascent identity that made the v1 such a success.

We know that you will enjoy this product and wish you many safe and enjoyable flights.

Thank you again for your purchase.
Ascent Products

**Safety Information**

Warning; This product is not intended to be used as a precise measurement of altitude, velocity, or temperature.

Warning; This product contains a Lithium-ion rechargeable battery. The product must be disposed of properly. Use only in accordance with operating instructions.

Warning; This product and its components contain chemicals known to the State of California to cause cancer and birth defects, or reproductive harm. This notice is being provided in accordance with California Proposition 65. If you have further questions please contact Ascent Products.

Charging the Battery

Your vario operates on a rechargeable lithium-ion battery. The battery can provide power for at least 10 hours of flight time, or up to 1 year standby time when fully charged. The beep volume and mode have a noticeable affect on battery life with louder and longer beeps requiring more power and reducing battery life.

To charge the battery, plug the micro-USB end of the cable into the product and plug the other end into the AC wall charger, car charger, or computer. The screen will display "USB Connected Charging". When the unit is completely charged the screen will change to "USB Connected Charged".

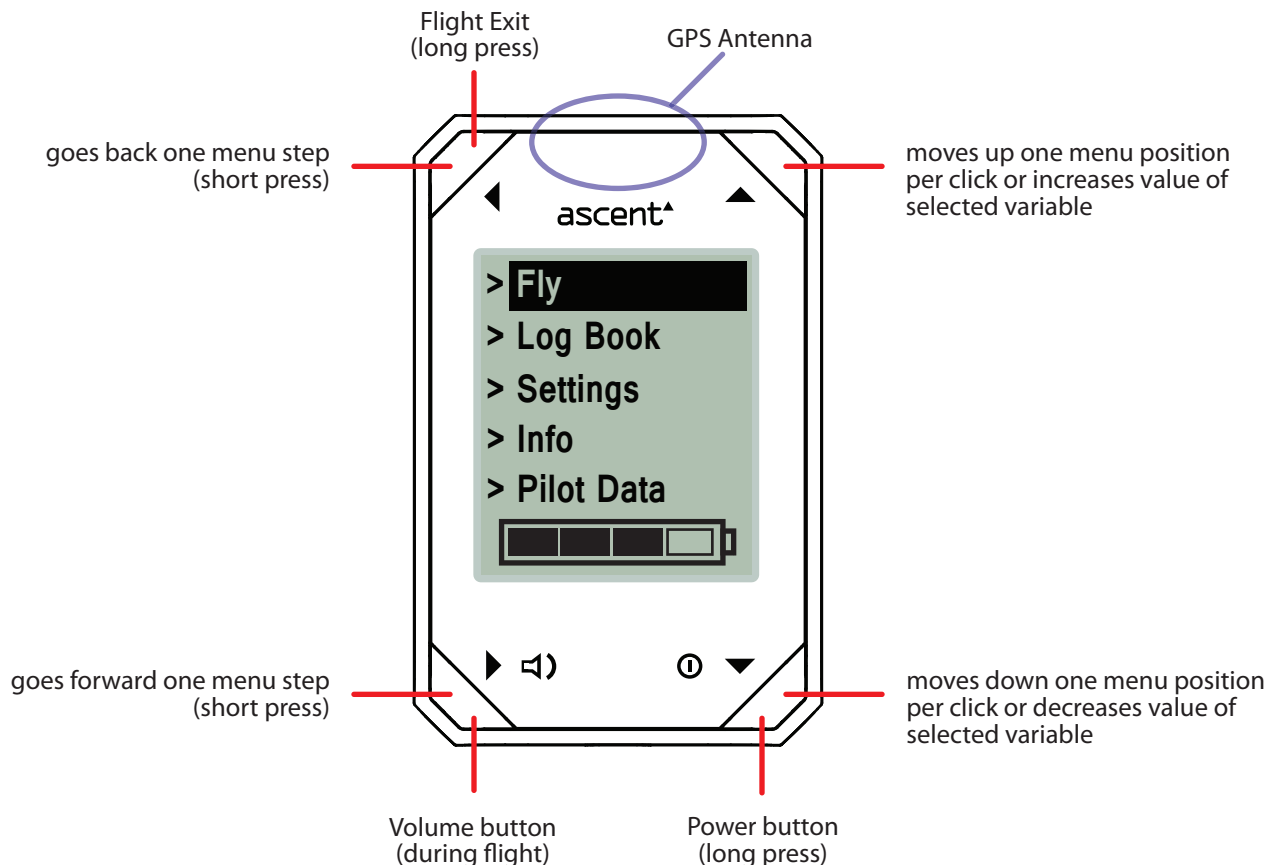
The product takes less than 2 hours to fully charge. Due to protection circuits it is not possible to over-charge. When fully charged, the icon on main menu will show full. Lithium-polymer batteries do not have a memory and there is no advantage to letting the unit run completely out of power prior to charging. Therefore you are advised to keep the unit fully charged so that it is ready to use when you are ready to fly.

If the battery becomes critically low, the unit will shut off and not turn on again. We recommend charging the battery as soon as possible to avoid possible permanent damage caused by over discharging the battery. Avoid storing and charging the battery in extreme hot (>40°C) or cold (<0°C) environments.

Product Overview

To get the most out of your new product we recommend that you read the entire manual. However, we believe that once you start using the menus you will find the operation of the product easy and intuitive.

The product has four push buttons for navigation and adjustment as shown below.



Turning the vario on and off

Press and hold the **ⓘ** button until the prompt appears (2 seconds), then with "Yes" highlighted, press the **▶** button to turn the unit on.

As soon as the unit is turned on, it will attempt to start acquiring satellites. Please make sure that the antenna has a clear view of the sky during use and especially during the calibration process. This process should take less than 3 minutes however we suggest that you turn the unit on and enter the Fly mode early in your setup routine.

To turn the unit off, press and hold the **ⓘ** button for 2 seconds. Note that it is not possible to turn the unit off while in Info mode.

To extend the battery life, after 30 minutes of inactivity the vario automatically turns itself off. This will not happen in the fly or info mode.

When the unit is turned on, the main menu is displayed (shown above). This screen has five options: Fly, Log Book, Settings, Info, and Pilot Data. Use the **▲** and **▼** buttons to highlight your choice and press the **▶** button to select. This page also displays an estimate of the remaining battery charge using an icon at the bottom of the screen.

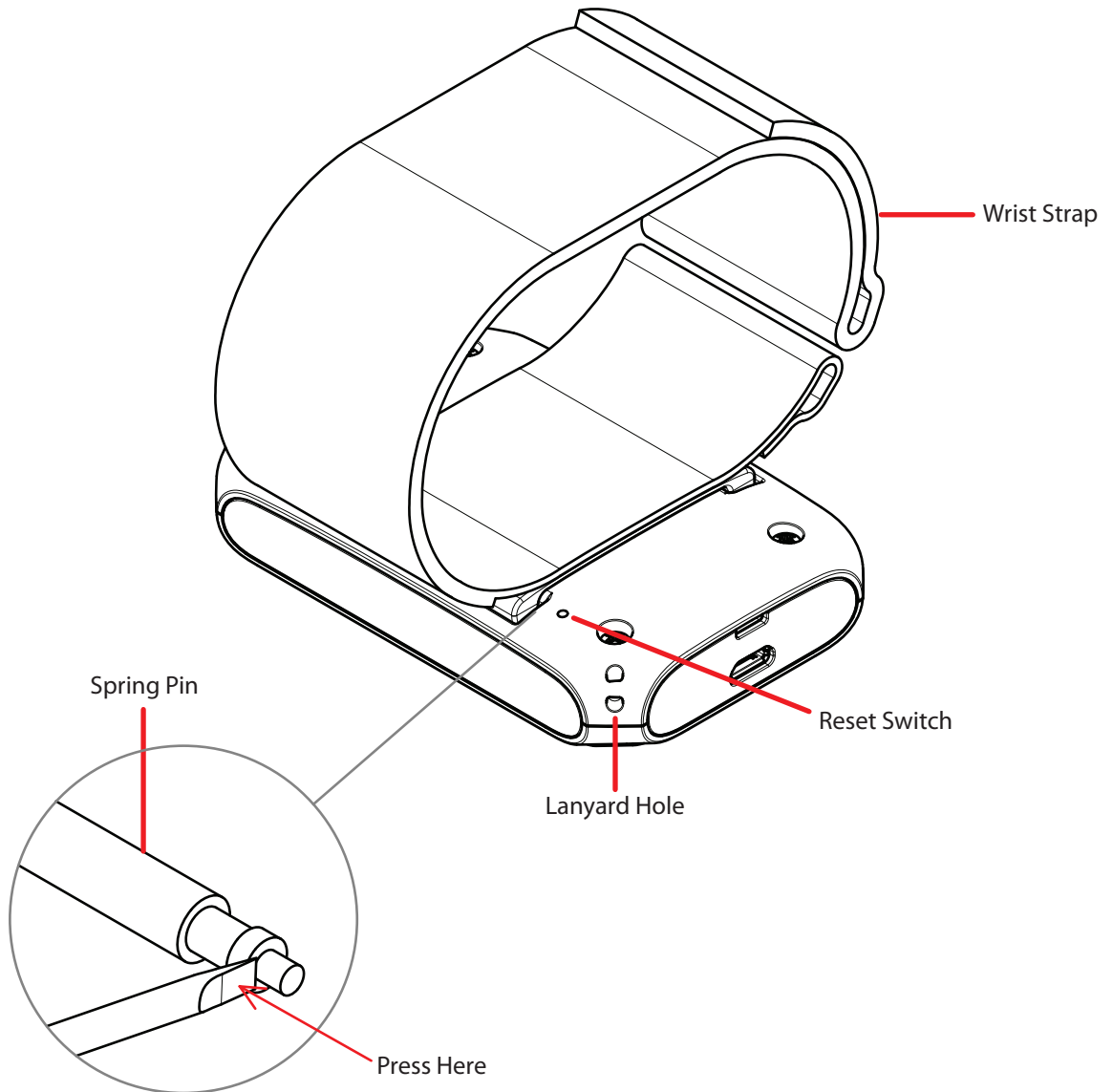
Starting and Ending a Flight

Use the **▲** and **▼** buttons to highlight Fly and then press the **▶** button to enter Fly Mode. The unit will not start recording a flight (and by default not beep) until the velocity threshold has been crossed. This thresholds can be adjusted in the Settings menu. To exit and save the flight, press and hold the **◀** or **ⓘ** button.

Wrist Strap

The wrist strap is secured to the vario body by two spring pins (similar to those used on a typical watch). To remove the strap (to replace it with a new wrist strap or the included riser strap) place the vario face down on a non scratching surface and with a small screwdriver or similar tool place the end between the spring pin shoulder and the vario body. Carefully compress the spring pin several mm and the pin should disengage from the body. Repeat on the other side.

Installation of the strap is done by inserting the spring into the strap hole and aligning one end of the pin into one of the holes in the back cover. Carefully compress the other end of the spring pin while aligning the tip with the other hole in the body. Release the pin and be sure to give the strap a good pull to make sure that the pins are well seated and engaged.



Troubleshooting

If the vario is not responding to button presses, there are a few ways to reset the unit. Plugging the vario in to a computer or a power source may help (especially if the problem is low battery related). If not, then it is possible to perform a software reset by pressing all 4 buttons at the same time. If this does not help, it is possible to perform a hardware reset by inserting a paper clip or other similar pin into the hole on the back of the unit and pressing gently until you feel a "click".

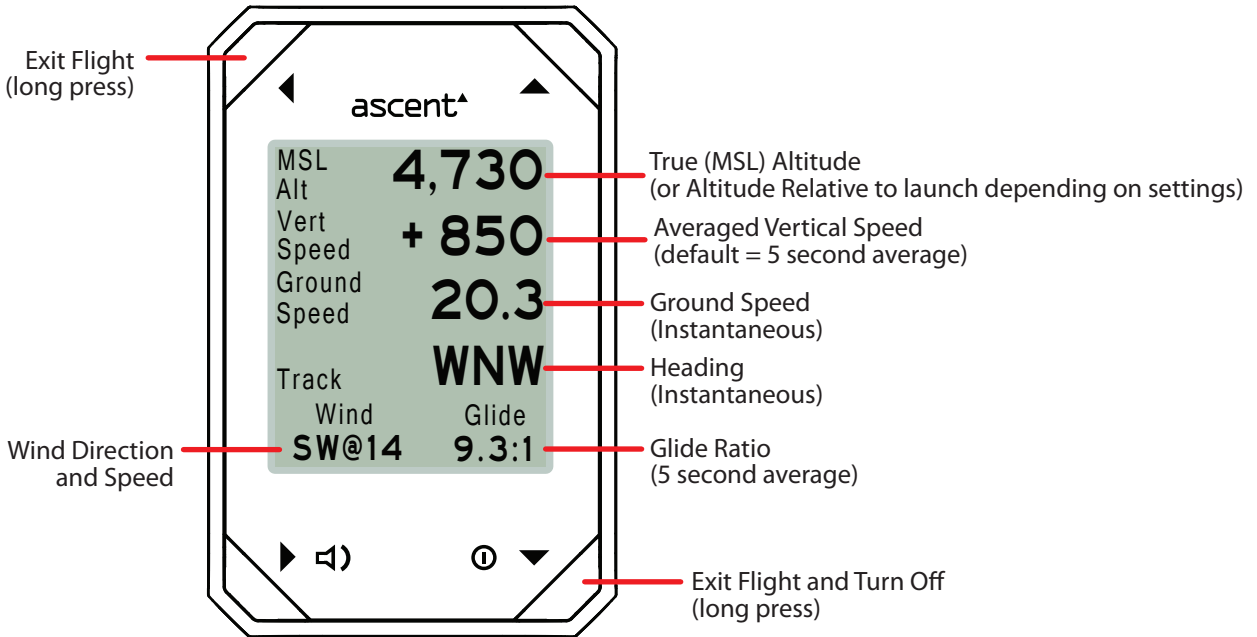
When reset, the screen will go blank and return to the start-up screen. Please note that the flight logs will not be erased. If it is ever necessary to perform a reset, please send an e-mail to support@ascentvario.com with a description of the problem and solution.

Fly Mode

The main fly screen is shown below. By briefly pressing any of the four buttons during the flight, the screen will temporarily display other flight information (as shown on the next page) for 5 seconds and then return to the default screen.

When you enter flight mode, the unit will beep twice to indicate the current volume level.

A long press of the ◀ or ⓪ button will exit the Flight Mode completely and stop the recording of flight data.



The last line of the display will show “Calibrating” during the entire calibration process. Please make sure that the front of the vario has a clear view of the sky throughout this important callibration period.

The wind speed and direction are calculated based on the fastest and slowest ground speed recorded while turning in a complete circle. As you continue to make additional circles, this value is slowly adjusted and improved. While flying straight, it stops re-calculating and the last known wind speed and direction are remembered and displayed. The next first complete circle will then come up with a new value. Elongating your turns and/or flying in a poorly shaped circle should not affect this calculation. However artificially speeding up and/or slowing down during the circle will alter the calculated values.

Fly Mode - Alternate Screens

By briefly pressing any of the four buttons during the flight, the screen will temporarily display other flight information for 5 seconds and then return to the default screen.

◀ Page

Time	13:24
Duration	1:56
Distance And	6.3
Direction from Start	NW
Temp.	76.5°

Time
 Duration of Flight (h:mm)
 Distance from Launch (mi. or km)
 Direction from Launch
 Temperature (°F or °C)

▶ 🔊 Page

Volume

Pressing the 🔊 button will display the current volume. Press the ▲ or ▼ button to adjust the volume.

▲ Page

Max Alt	4,730
Rel Alt	1,290
Max Lift	850
Avg Lift	620
Max Sink	-730

Maximum Altitude this flight (ft or m)
 Altitude Relative to launch (ft or m)
 (or True (MSL) Altitude depending on settings)
 Maximum instantaneous lift this flight (non-averaged) (fpm or m/s)
 Maximum averaged lift this flight (fpm or m/s)
 Maximum instantaneous sink this flight (fpm or m/s)

▼ ⓘ Page

Latitude
0.00000

Longitude
0.00000

Current GPS Coordinates

Log Book

Use the ▲ and ▼ buttons to highlight Log Book and then push the ► button to enter the Log Book. The h1 can store flight summary data for up to 300 flights. Pushing the ▲ and ▼ buttons will scroll through the recorded flights. Pressing the ► button will allow you to see additional flight details. Note that the data in the log book will be saved even if the battery is completely discharged or the unit is reset.

Flight # 059
 Date: 29/01/2011
 Start Time: 15:36

 Flight Duration: 1:40
 Max Dist: 12.5mi

 Max Temp: 80°F
 Min Temp: 60°F

Flight Log Number
 Launch Date
 Launch Time

 Flight Duration
 Maximum distance from Launch

 Maximum temperature
 Minimum temperature

Flight # 059

 Start Alt: 12,083
 Max Alt: 18,522
 End Alt: 175

 Max Lift: +520
 Avg. Lift: +480
 Max Sink: -510

Start (Launch) Altitude
 Max Altitude
 End (Land) Altitude

 Max Lift (instantaneous)
 Max Lift (averaged)
 Max Sink (instantaneous)

Flight # 059

 Max Ground
 Speed:
 N@35.7
 Max Wind
 Speed:
 SW@9

Maximum Ground Speed

 Maximum Wind Speed

Flight # 059

 Start Location
 Lat: 33.82087
 Long: -116.95718

 End Location
 Lat: 33.81973
 Long: -116.96423

Launch GPS Coordinates

 Landing GPS Coordinates

Flight # 059

 > Delete?
 ● No
 ○ Yes

Use the ▼ button to highlight Yes and then push the ► button to delete this flight. Note: this action permanently deletes this flight number from the log book and the remaining flights will not be re-numbered.

Settings

To enter the Settings Menu, highlight Settings on the main menu and press the ► button. From this page you can select which category of settings you wish to modify. There are currently nine choices: Altimeter, GPS, Beep, Flight, Date & Time, Units, Compass, Memory, Display, and Language. All of these settings are saved even if the battery is completely discharged.

Altimeter

- Altitude Calibration
- GPS (WGS84 Geoid)
 - QNH Pressure
 - > 1013.25 hPa
 - Altitude
 - > 1,752 ft

This setting allows you to select whether to use the GPS to calibrate the pressure altitude prior to launch, or to set the altitude manually. The GPS uses the WGS-84 Geoid method to determine the altitude. This should approximately match standard pressure altitude.

The QNH Pressure is the the extrapolated barometric pressure at sea level. This can be found by contacting your local airport. Some competitions may require you to calibrate the vario using this method.

Alternatively, if you know the altitude of your launch, you can manually calibrate the vario based on this.

Altimeter cont.

- Displayed Altitude
- Pressure
 - GPS (WGS84 Ellips)
- Altitude Reference
- True (MSL)
 - Relative to Launch

This setting allows you to select whether to display the altitude based on pressure or GPS. The pressure altitude is what normally defines airspace. The WGS84 Ellipsoid altitude is closest to what would be shown in Google earth and other mapping software. The IGC track log file records both the pressure and GPS altitude 1x per second.

This setting selects what altitude is displayed on the main fly screen. The Relative to Launch altitude is automatically reset to zero for every flight when you first enter the fly mode. Relative altitude may be more convenient for some site flying.

GPS

- GPS Units
- DD.ddddd°
 - DD°MM.mm'
 - DD°MM'SS"

This setting selects the units for GPS display

- Decimal Degrees
- Degrees, Decimal Minutes
- Degrees, Minutes, Seconds

Beep

- Beep Style
- Short
 - Long
 - Sweep
- Sink Alarm
- Alarm On
 - Alarm Off
- Sink Rate
- > 590 ft/min

Ascent has three beep options. Short (which is “quieter” and sounds closer to our v1 Standard beep), Long (which sounds “louder”), and Sweep, which updates the frequency of the tone mid-beep to the latest vertical speed information. Note that longer beeps, and louder volume settings require more power and slightly reduce the battery life. Therefore the “Sweep” beep is limited to medium volume to ensure a minimum of 10 flight hours.

It is possible to turn the “Sink Alarm” on and off.

This is the instantaneous negative vertical speed required for the sink alarm to go off.

Flight

Vertical Speed Avg.
> 01 seconds

This is the number of seconds over which the displayed vertical speed is averaged. The "beep" always uses the instantaneous vertical speed.

Start Flight
> 07 mph

After entering Fly Mode, the unit waits until this customized velocity threshold is crossed. A series of beeps will play to indicate that the flight has initiated.

Preflight Beep
 Off
 On

Prior to a flight being initiated the "preflight beeps" can be suppressed. This prevents the unit from making annoying and battery wasting beeps prior to launching.

Date & Time

Time: 14:19

The time is set automatically using the GPS signal, however you need to enter the UTC offset manually.

UTC Offset:

> -8:00

Date

07/20/2012

Date Format

- DD/MM/YYYY
- MM/DD/YYYY

The date is set automatically using the GPS signal, however you can choose which format you would prefer the date displayed.

Units

Altitude

- m
- ft

Distance

- km
- mi

Temperature

- °C
- °F

On these pages, you can customize the displayed units.

Units Continued...

Vertical Speed

- m/s
- fpm

Ground Speed

- kph
- mph

Compass

Compass

- Cardinal (WSW)
- Degrees (252°)

On this page, you can customize the way Compass directions are displayed.

Memory

Flight Log Book
 125 Flights
 62.5% Full
 > Clear Log Book?

There are a maximum of 300 Log summaries available in the Flight Log Book. When these are full, it will be necessary to clear the Log Book before recording more tracks.

There are additionally up to 50 hours of track log (igc/kml) memory available (1-second intervals). After this memory is full, it will start overwriting existing tracks (oldest first).

Display

Contrast
 > 3

The display contrast is pre-calibrated, however can be adjusted here if desired. This setting makes the entire display lighter or darker.

Language

- Deutsch
- English
- Español
- Français
- Italiano
- Norsk
- 日本語

Here it is possible to select the language for the vario. Please contact us if you are missing your language, or if you find a translation error.

Info

To enter the Info screen, highlight "Info" on the main menu and press the ► button.

Ascent h1
 Software: v1.303
 Serial# 2C2001AC
 07/20/2012
 10:38:05

Altitude: 71.3m
 Lat: 0.00000
 Long: 0.00000

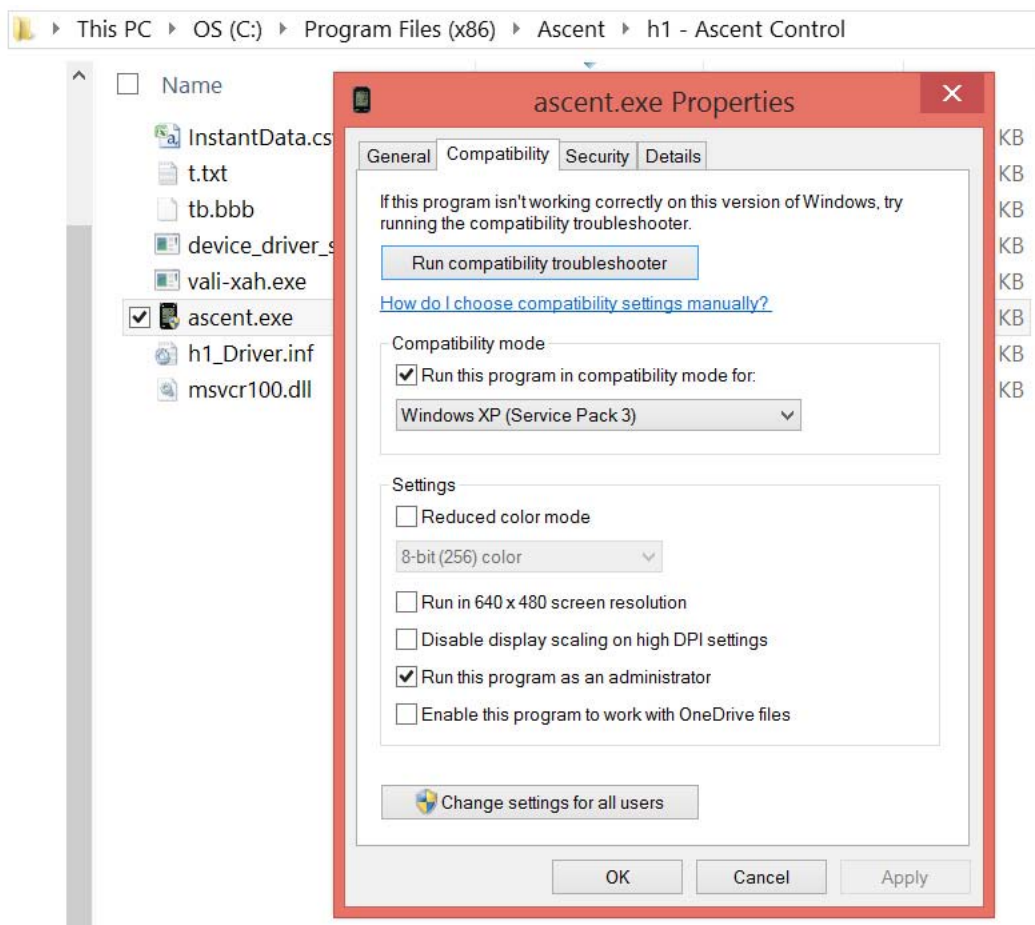
Ascent hardware version
 Ascent software version
 Unit Serial Number
 Date
 Time

Altitude
 Latitude
 Longitude

Connecting to a Windows Computer

Please navigate to the support tab of www.ascentvario.com to download and install the “h1 Ascent Control (PC)” software. Please note that Microsoft.NET 4.0 (or newer) needs to be installed on your computer. This is pre-installed on most computers, but if not a quick search on the internet will find the download link.

To prevent any issues regarding saving tracks or driver software, right click on the software and select Properties. Then check “Run this program in XP Compatibility mode” and “Run this program as administrator” as shown below.



To connect your variometer to a computer plug the micro USB end of the supplied cable into the product. Plug the other end of the cable into a computer USB port.

If you have any difficulties with this process, please send an e-mail to support@ascentvario.com. Please include the vario firmware version, and what operating system you have (Windows XP, Windows 8, etc.).

Ascent Control for Windows

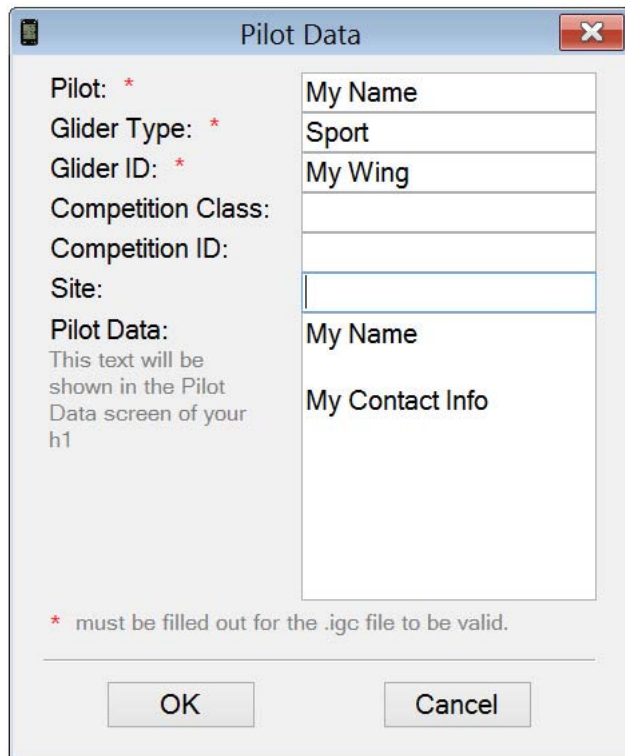
When you connect the h1 to your pc, the Ascent Control software should automatically recognize the device and display the Serial Number. If you have an internet connection, the software will compare the firmware on your vario with the latest version available on our web site. If the firmware on your h1 is out of date, it will recommend that you download and install the latest version. Click "About" to see the current version, and click the link (if available) to download the newer firmware. Then use File -> Upgrade Firmware to upgrade to the newer version. Some versions of Chrome do not allow the link to work. If you have any problems, please send an e-mail to support@ascentvario.com.



It is necessary to fill out the first 3 lines of the "Pilot Data" form (Pilot, Glider Type, and Glider ID) in order for the downloaded .igc tracks to be "valid" and accepted by most competitions. This information, along with the Competition Class, Competition ID, and Site will be stored on the vario and hardware encrypted into the header of the downloaded .igc file. It is not possible to edit the .igc file without making the g-record "invalid".

Select the file you want to download using the pull-down menu, and then select the format (.igc for gliding competitions such as Leonardo, or .kml for Google Earth), then click "Download Tracklog".

Click "Download Log Book" to download the complete log book on the vario in .csv (comma separated values) format. This file can be easily imported into a spreadsheet program such as Excel.

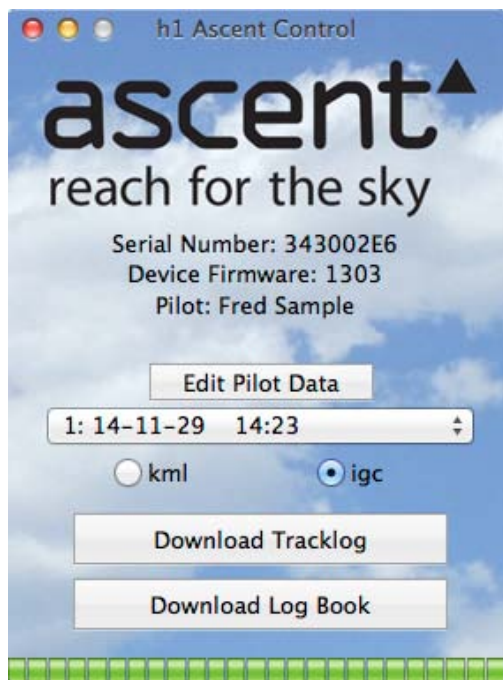


The h1 is compatible with several 3rd party softwares such as GpsDump, GpsDump for Android, and ParaFlightBook. These pc softwares use the Ascent Control driver, so it is necessary to first install the Ascent Control software before using them.

Connecting to an Apple Computer - (10.7 and newer)

Please navigate to the support tab of www.ascentvario.com to download and install the "h1 Ascent Control (Mac)" software. Drag the downloaded "h1 Ascent Control.dmg" to your Applications folder.

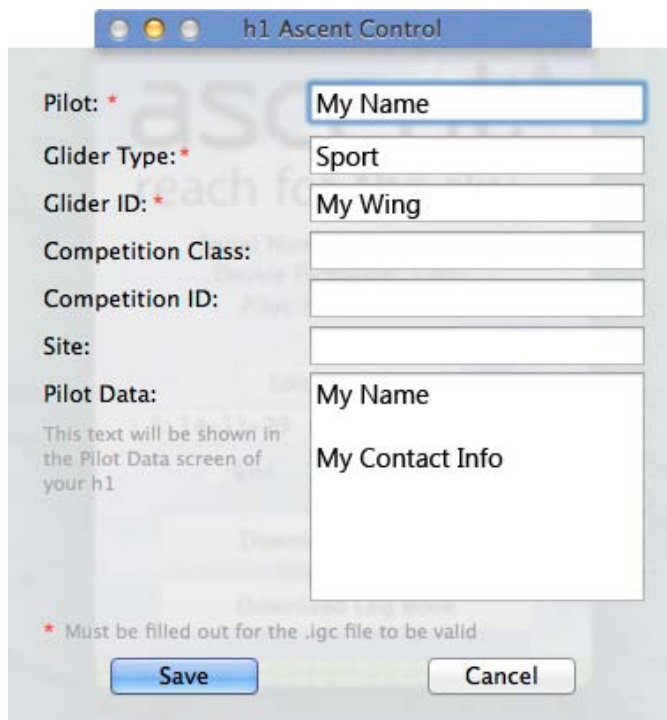
When you connect the h1 to your Mac, the Ascent Control software should automatically recognize the device and display the Serial Number and current firmware version. If you have an internet connection, the software will compare the firmware on your vario with the latest version available on our web site. If the firmware on your h1 is out of date, it will recommend that you download and install the latest version.



It is necessary to fill out the first 3 lines of the "Pilot Data" form (Pilot, Glider Type, and Glider ID) in order for the downloaded .igc tracks to be "valid" and accepted by most competitions. This information, along with the Competition Class, Competition ID, and Site will be stored on the vario and hardware encrypted into the header of the downloaded .igc file. After downloading, it is not possible to edit the .igc file without making the g-record "invalid".

Select the file you want to download using the pull-down menu, and then select the format (.igc for gliding competitions such as Leonardo, or .kml for Google Earth), then click "Download Tracklog".

Click "Download Log Book" to download the complete log book on the vario in .csv (comma separated values) format. This file can be easily imported into a spreadsheet program such as Excel.



Care of Product

Your product is constructed of high quality materials and does not require maintenance other than cleaning. Clean the product using a soft cloth dampened with a mild detergent solution and then wipe dry. AVOID chemical cleaners and solvents that may damage plastic and braided nylon components.

Do not store the product where prolonged exposure to sun, heat, rain, snow, or extreme cold may result in permanent damage.

Do not store the unit where the buttons can be depressed as this may lead to the battery being drained.

The product is not waterproof so do not immerse it in water.

Specifications

Altimeter:

High resolution (10cm), temperature corrected, pressure sensor - sampling 32x per second

GPS or user calibrated altitude

True and Relative (to launch) altitude

Display in meters or feet with 1 meter (3 ft) resolution

GPS:

48 Channel GPS Receiver

Variometer:

Customizably averaged digital display with 0.1 m/s (20 ft/min) resolution

Instantaneous audio with adjustable volume

Sink alarm with user selectable threshold

Temperature:

Ambient temperature in Fahrenheit or Celsius with 1 degree resolution

Memory:

Automatically records Flight Log summary data for up to 300 flights

Automatically records up to 50 hours of 1-second interval detailed tracklog data in igc or kml format

Display:

Black & White Transflective Graphic LCD with 128 x 128 pixel resolution

Battery:

Custom 830 mAh rechargeable lithium-ion battery with Sanyo cell

Physical Properties:

8.3cm (3.28") x 5.4cm (2.13") x 1.5cm (0.59")

93g (3.3 oz)

Software License Agreement

By using you Ascent Products variometer you agree to be bound by the terms and conditions of the following software license agreement.

Ascent Products grants you a limited license to use the software embedded in this device in the normal operation of the product. Title, ownership rights, and intellectual property rights of the software remain Ascent Products.

Your product's software is property of Ascent Products and is protected under the United States copyright laws and international copyright treaties. The structure, organization, and code of the software are valuable trade secrets to Ascent Products and shall remain so. You agree not to decompile or reverse engineer the software to be used in any other way. You agree not to export or re-export the software to any country in violation of the export control laws of the United States

Limited Warranty

Your Ascent Products vario is warranted to be free of defects in materials or workmanship for two years from the date of purchase. Within this period Ascent Products at its sole option may repair or replace any parts that fail in normal use. These repairs or replacement will be made at no charge to the customer. The customer is responsible for shipping and handling of the item.

The warranty does not cover failures due to abuse, misuse, accident, liquid ingress, or unauthorized alterations or repairs.

To obtain warranty service, contact Ascent Products by e-mail. Do not return the unit without first contacting Ascent Products.

Contact Us

For questions or assistance with your vario please contact

www.ascentvario.com

support@ascentvario.com

Ascent Products
14781 Pomerado Road, Suite #210
Poway, CA 92064
USA

Please also "like" our facebook page (<http://www.facebook.com/ascent.vario>) for occasional updates.